

\$3,830,000 - 36 Cardona Drive, Westlake

MLS® #20927188

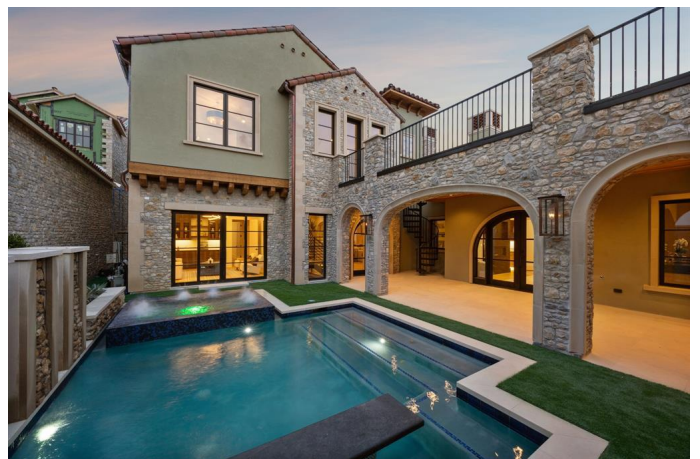
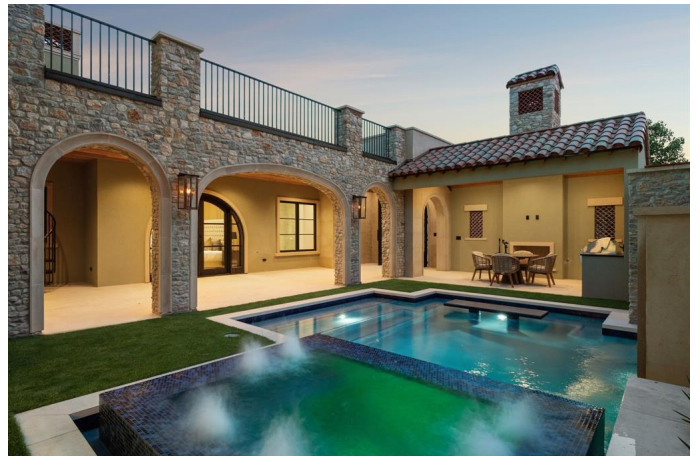
\$3,830,000

4 Bedroom, 4.20 Bathroom, 5,380 sqft

Residential on 0.15 Acres

Westlake Entrada, Westlake, TX

Experience refined living in this exceptional Samuel Osborne custom home, thoughtfully situated in the heart of Westlake Entrada—a European-inspired community. Designed to evoke Old World elegance with the ease of modern luxury, this home features artfully curated interiors set within timeless Spanish architecture. Enter through grand iron gates into a private courtyard, where resort-style amenities await—including a pool, spa, cabana, fireplace, outdoor kitchen, and a spiral staircase that ascends gracefully to a spacious upper balcony. Inside, the home captivates with soaring ceilings, large windows, a custom cast-stone fireplace, and a striking floating staircase—all framed by exquisite designer finishes. Sophisticated elements such as rich wood accents, designer lighting, and a glass-enclosed wine room reflect refined taste and attention to detail. At the heart of the home, the chef's kitchen is a showpiece, featuring a quartzite-wrapped hood, an oversized waterfall island, and premium Wolf and Sub-Zero appliances. A morning coffee bar flows seamlessly into the owner's suite, where arched glass doors offer a private escape to the poolside courtyard. The primary bath features a freestanding soaking tub and dual showers enclosed in frameless glass, while the custom boutique-style closet is enhanced with a washer and dryer connection for unparalleled convenience. The main level offers versatility with a home office or game room overlooking the courtyard, as well as an



en-suite guest suite with a private balcony. Upstairs, you'll find two additional en-suite bedrooms, a secondary living area, and access to the balcony. An elevator shaft offers future-ready convenience, showcasing thoughtful design throughout. The basement level features a media room or golf simulator and boasts the only four-car garage in Entrada. Located near DFW Airport, Westlake Lifetime Fitness, Southlake Town Square. Zoned to award-winning Carroll ISD and Westlake Academy (an IB World School).

Built in 2025

Essential Information

MLS® #	20927188
Price	\$3,830,000
Bedrooms	4
Bathrooms	4.20
Full Baths	4
Half Baths	2
Square Footage	5,380
Acres	0.15
Year Built	2025
Type	Residential
Sub-Type	Single Family Residence
Style	Mediterranean, Spanish
Status	Active

Community Information

Address	36 Cardona Drive
Subdivision	Westlake Entrada
City	Westlake
County	Tarrant
State	TX
Zip Code	76262

Amenities

Utilities	City Sewer
-----------	------------

# of Garages	4
Garages	Epoxy Flooring, Garage Faces Rear, Oversized
Has Pool	Yes
Pool	Cabana, Heated, In Ground, Outdoor Pool, Water Feature

Interior

Interior Features	Built-in Features, Built-in Wine Cooler, Cable TV Available, Chandelier, Decorative Lighting, Eat-in Kitchen, Flat Screen Wiring, High Speed Internet Available, Kitchen Island, Smart Home System, Sound System Wiring, Walk-In Closet(s), Wet Bar
Heating	Central, Fireplace(s)
Fireplace	Yes
# of Fireplaces	3
Fireplaces	Family Room, Gas, Master Bedroom, Outside

Exterior

Exterior Features	Attached Grill, Balcony, Courtyard, Covered Porch(es), Dog Run, Gas Grill, Rain Gutters, Lighting, Outdoor Grill, Outdoor Kitchen, Covered Courtyard, Private Entrance
Lot Description	Interior Lot, Sprinkler System
Roof	Spanish Tile
Construction	Rock/Stone, Stucco
Foundation	Slab

School Information

District	Carroll ISD
Elementary	Walnut Grove
Middle	Carroll
High	Carroll

Listing Details

Listing Agent	Rosie Smelcer
Listing Office	Compass RE Texas, LLC

Users may not reproduce or redistribute the data found on this site. The data is for viewing purposes only. Data is deemed reliable, but is not guaranteed accurate by the MLS or NTREIS.

Listing information last updated on November 21st, 2025 at 11:05am CST